



All artwork ©James C. Christensen ©The Greenwich Workshop® Inc

BENEDICTION (detail)



The  
**Greenwich Workshop**  
North America's Leading Publisher of Fine Art Editions

CHRISTENSEN

# THE ART OF JAMES C. CHRISTENSEN: THE ART OF IMAGINATION



**ALL THE WORLD'S A STAGE**  
**Fine Art Giclée Canvas:** Sold Out at Publisher. Ask Your Dealer for Availability.  
**Fine Art Print:** limited to 3000 s/n. 31 3/4" w x 23 5/8" h. \$225  
 Low inventory



**GARDEN RENDEZVOUS**  
**Fine Art Giclée Canvas:** Sold Out at Publisher. Ask Your Dealer for Availability.  
**Fine Art Print:** limited to 950 s/n. 26 1/2" w x 17 1/2" h. \$185



**ST. BRENDAN THE NAVIGATOR**  
**Fine Art Print:** limited to 650 s/n.  
 8" w x 12" h. \$140 Low inventory



**FLIGHT OF THE FABLEMAKER**  
**Fine Art Print:** limited to 2500 s/n. 30" w x 22 1/2" h.  
 \$195 Low inventory



**TWILIGHT**  
**Fine Art Giclée Canvas:**  
 23" w x 17" h. Limited to 300. \$495 Low inventory  
**Greenwich Workshop Fine Art Print:**  
 20" w x 15" h. Limited to 550. \$160 Low inventory

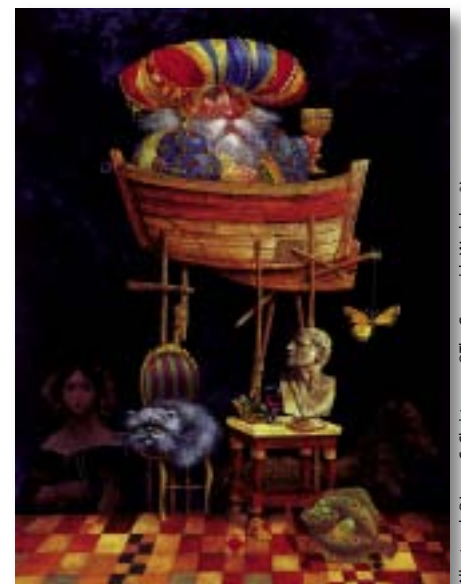


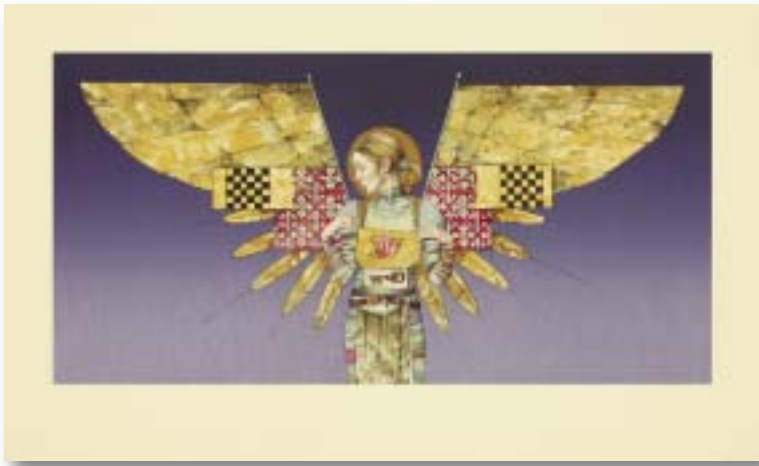
**DUSK**  
**Fine Art Giclée Canvas:** limited to 300 s/n. 24" w x 12" h. \$495 Low inventory

**MONARCH OF ALL THE SURVEYS**  
**Fine Art Giclée Canvas:**

Sold Out at Publisher. Ask Your Dealer for Availability.

**Fine Art Print:** limited to 750 s/n.  
 10 1/2" w x 14" h.  
 \$135





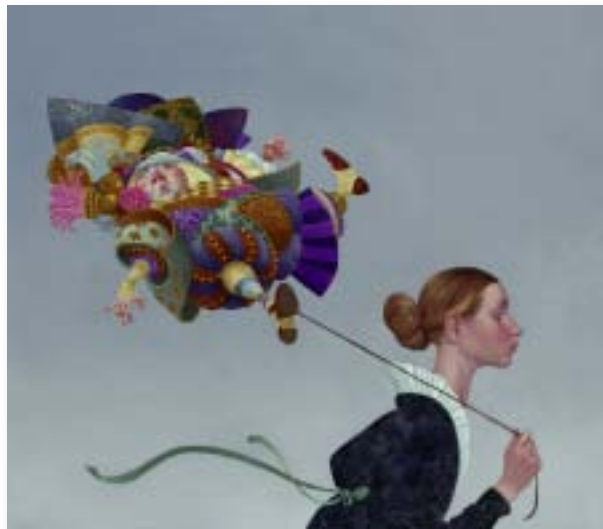
THE MESSENGER  
**Fine Art Stone Lithograph:** limited to 200 s/n. 24" w x 12" h. \$775



SHARING OUR LIGHT  
**Fine Art Giclée Canvas:** limited to 450 s/n. 18" w x 24" h. \$595  
**Fine Art Print:** limited to 650 s/n. 16 1/4" w x 22" h. \$165



ST. NICHOLAS OF MYRA  
**Fine Art Giclée Canvas on Claybord®:** limited to 450 s/n. 7" w x 13" h. \$260  
 Low inventory



POOFY GUY ON A SHORT LEASH  
**Fine Art Print:** limited to 650 s/n. 20" w x 15" h. \$160  
 Low Inventory  
**Fine Art Giclée Canvas:** limited to 300 s/n. 23" w x 17" h. \$495  
 Low Inventory



SAINT WITH WHITE SLEEVES  
**Fine Art Giclée Canvas:** Sold Out at Publisher. Ask Your Dealer for Availability.  
**Fine Art Print:** limited to 550 s/n. 9 1/8" w x 20" h. \$150  
 Low inventory



WE THREE KINGS  
**Fine Art Offset Canvas:** limited to 450 s/n. 25" w x 16" h. \$695  
**Fine Art Print:** limited to 950 s/n. 20 1/4" w x 17 1/2" h. \$160  
 Low inventory

All artwork ©James C. Christensen ©The Greenwich Workshop® Inc.



FIONA

**Fine Art Giclée Canvas:** limited to 400 s/n. 20" w x 16" h. \$495  
**Fine Art Print:** limited to 450 s/n. 17½" w x 14" h. \$165



THE BLIND LEADING THE BLIND

**Fine Art Giclée Canvas:** limited to 550 s/n. 24" w x 12" h. \$550  
**Fine Art Print:** limited to 450 s/n. 20" w x 10" h. \$165



VIRTUE

**Fine Art Giclée Canvas:**  
 limited to 550 s/n. 14" w x 22" h. \$525



OUTSIDE THE BOX  
**Fine Art Giclée Canvas:**  
 limited to 325 s/n.  
 30" w x 18" h.  
 \$595



MEN AND ANGELS: THE ART OF JAMES C. CHRISTENSEN

**Greenwich Workshop Fine Art Book**  
 Text by Kate Horowitz  
 Hardcover, jacketed  
 Over 300 paintings plus sketches, 256 pages, 11 x 14 inches \$85



COURTSHIP

**Fine Art Giclée Canvas:** limited to 375 s/n.  
 20" w x 16" h. \$495



**FALSE MAGIC**  
**Greenwich Workshop Fine Art Bronze Sculpture:**  
limited to 100 s/n.  
approximate height 20"  
\$4950



**FALSE MAGIC**  
**Fine Art SmallWorks™ Giclée Canvas:**  
**Sold Out at Publisher. Ask Your Dealer for Availability.**

The first 50 purchases will include the *False Magic* corresponding numbered Artist's Proof on canvas.



**BENEDICTION**  
**Bronze:** limited to 100 s/n.  
10½" w x 20" h. \$5500

**SLEEPER LOST IN DREAMS**  
**Bronze:** limited to 100 s/n.  
9" w x 24" h. \$6000





**THE YELLOW ROSE**  
**Fine Art MasterWork™ Giclée Canvas:**  
Sold Out at Publisher. Check with your dealer for availability.

**Fine Art Giclée Canvas:**  
limited to 250 s/n. 12" w x 24" h. \$495



**ALL THAT SHE HAD**  
**Fine Art Giclée Canvas:** limited to 450 s/n.  
12" w x 17" h. \$395



**SAINT APOLLONIA**  
**Fine Art SmallWorks™ Giclée Canvas:**  
limited to 450 s/n. 8" w x 10" h. \$195



**ANGEL UNOBSERVED**  
**Fine Art SmallWorks™ Giclée Canvas:**  
350 s/n. 9" w x 12" h. \$225



**THE RETURN OF THE FABLEMAKER**  
**Fine Art MasterWork™ Giclée Canvas:**  
Sold Out at Publisher. Check with your dealer for availability.  
**Fine Art Giclée Canvas:** limited to 125 s/n. 24" w x 18" h. \$495

All artwork © James C. Christensen © The Greenwich Workshop, Inc.



PARABLES

**Fine Art MasterWork™ Anniversary Giclée Canvas:** Sold Out at Publisher.  
Ask Your Dealer for Availability.

**Fine Art Anniversary Giclée Canvas:** edition not to exceed 550 s/n. 22" w x 17" h. \$495



THE TIE THAT BINDS

**Fine Art Diptych Giclée Canvas:** 250 s/n. 16" w x 20" h. \$750  
Low inventory

**Fine Art Diptych Print:** 550 s/n. 11" w x 14" h. \$250



JONAH

**Fine Art Anniversary Giclée Canvas:**  
edition not to exceed 450 s/n.  
16" w x 12" h. \$425

ABOUT ARTIST JAMES C. CHRISTENSEN



James C. Christensen was born in 1942 and raised in Culver City, California. He studied painting at Brigham Young University as well as the University of California at Los Angeles before finishing his education at BYU.

Opulent, colorful and extraordinary are words that aptly portray Christensen's most popular artworks that have also been described as "creations from the land a little left of reality." When he isn't giving life to other's worlds, he paints a place of his own. The result is a unique kingdom where recognizable human emotions are often manifested as fish or fowl, utilizing the viewer's own imagination as no other artist can. "I don't think of myself as a fantasy artist," said Christensen. "I certainly have an affinity for myths, fables and ancient lore, but I also find time to create both beautiful women and landscapes.

The artist has been commissioned by both Time/Life Books and *Omni* to create illustrations for their publications and his work has appeared in the prestigious American Illustration Annual and Japan's

Outstanding American Illustrators. Christensen has also won all the professional art honors the World Science Fiction Convention can bestow, and multiple Chesley Awards from the Association of Science Fiction and Fantasy Artists.

His first book, *A Journey of the Imagination: The Art of James Christensen*, was published to great acclaim in 1994. His second, the adventure fantasy, *Voyage of the Basset*, has more than 75,000 copies in print. His subsequent books include the inventive *Rhymes & Reasons* (1997), *Parables*, *The Personal Illumination Series* and *The Personal Illumination Journal* (2000), a series of interactive journals, *A Shakespeare Sketchbook* (2001) and *James Christensen, Foremost Fantasy Artist* (2001).

Christensen was recently designated as a "Utah Art Treasure," one of Utah's Top 100 Artists by the Springville Museum of Art and received the Governor's Award for Art awarded by the Utah Arts Council recognizing the significance of Christensen's artwork to Utah's cultural communities. He was inducted into the *U.S. Art* magazine's Hall of Fame. Jim and his wife, Carole, co-chair the Mormon Arts Foundation.

For more fine art by James C. Christensen visit:  
[www.greenwichworkshop.com/christensen](http://www.greenwichworkshop.com/christensen)



Visit James C. Christensen in his studio at [www.greenwichworkshop.com/video](http://www.greenwichworkshop.com/video)  
View this book online at [www.greenwichworkshop.com/menandangels](http://www.greenwichworkshop.com/menandangels)