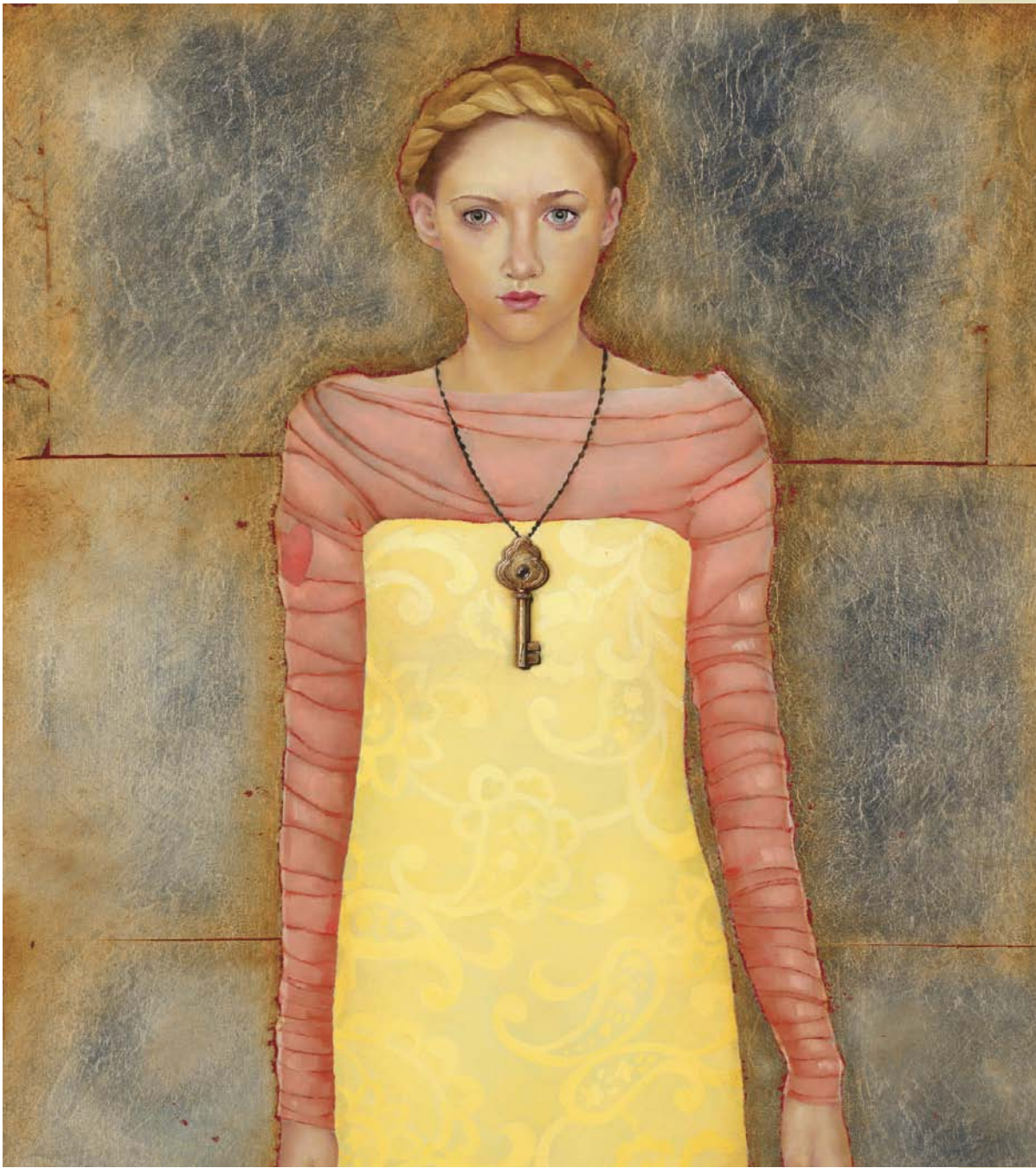


©Emily McPhie ©The Greenwich Workshop, Inc.



THE KEY TO HAPPINESS *(detail)*

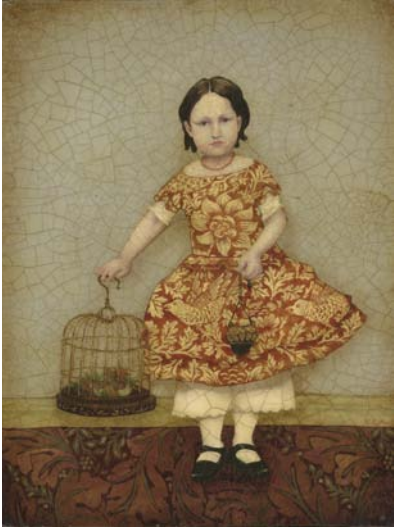


emily mcphie

The
Greenwich Workshop
North America's Leading Publisher of Fine Art Editions

EMILY MCPHIE

The Art of Emily McPhie



BIRDCAGE
Fine Art SmallWorks™ Giclée Canvas:
limited to 75 s/n. 9" w x 12" h. \$175



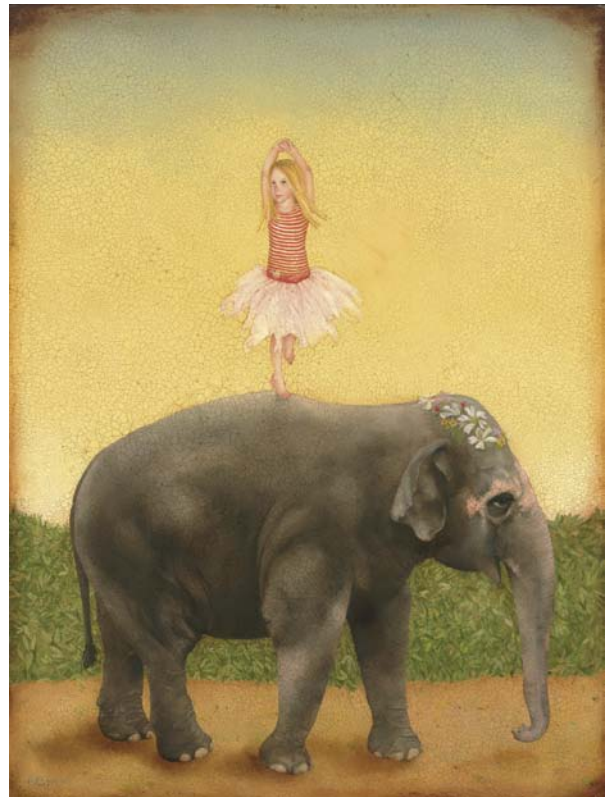
ONE IF BY LAND
Fine Art Giclée Canvas:
limited to 100 s/n. 13" w x 21" h. \$395



TORTOISE
Fine Art SmallWorks™ Giclée Canvas:
limited to 75 s/n. 10" w x 12" h. \$195



SERENA AND HER LION
Fine Art Giclée Canvas:
limited to 100 s/n. 12" w x 16" h.
\$295



PIROUETTES AND PACHYDERMS
Fine Art Giclée Canvas:
limited to 100 s/n. 15" w x 20" h.
\$450

All artwork ©Emily McPhie ©The Greenwich Workshop, Inc.



THE KEY TO HAPPINESS
Fine Art Enhanced Giclée Canvas:
limited to 100 s/n. 12" w x 16" h.
\$345



RUBY ROSE IN TIME OUT
Fine Art Giclée Canvas:
limited to 100 s/n. 24" w x 14" h.
\$495

BRANCH, AXE, PAPER, SCISSORS
Fine Art Giclée Print: limited to 75 s/n. 27" w x 10" h. \$250



ABOUT ARTIST EMILY MCPHIE



Emily McPhie

Emily McPhie was born in Utah in 1978 into the highly-artistic Christensen family. As a child, she toured the museums of the United States and Europe with her family. At each museum, Emily and her brothers and sisters were told they could choose a postcard as a souvenir and young Emily's postcard collection quickly filled with early American portraits and Degas' studies of young dancers. The influence of these museum trips is apparent in Emily's portfolio of paintings.

Growing up, the pursuit of art was second-nature for McPhie, who went on to win awards for art in high school and beyond. Emily grad-

uated from Brigham Young University with a Bachelor of Fine Arts with an emphasis in painting.

Emily currently resides in Chandler, Arizona with her husband Gavin and daughters Cordelia Lavender, Clover Iona and Ezra Petunia. "Motherhood has brought out some pretty strong emotions and ideas," says McPhie. "Translating those thoughts and emotions into images gives me clarity, and I find I want to document them before my perception changes." Her daughters show every sign of following in their mother's footsteps. "Half my studio is theirs," she laughs. "They have their table and their easel and all their supplies. I find that they're in here even when I'm not. They just love it. They're very creative."

For more fine art by Emily McPhie visit: www.greenwichworkshop.com/mcphie